

1. PART NO. EXPRESSION :

$\frac{S}{(a)} \frac{D}{(b)} \frac{S}{(c)} \frac{3}{(d)} \frac{0}{(e)} \frac{1}{(f)} \frac{0}{(f)} \frac{D}{(f)} \frac{1}{(f)} \frac{0}{(f)} \frac{M}{(f)} \frac{F}{(f)}$

(a) Series code

(b) Dimension code

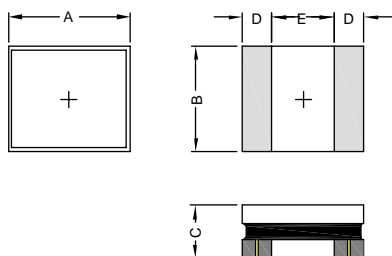
(c) Material code

(d) Inductance code : 100 = 10.0uH

(e) Tolerance code : M = $\pm 20\%$

(f) F : RoHS Compliant

2. CONFIGURATION & DIMENSIONS :

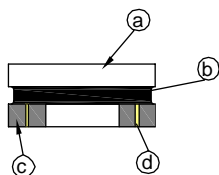


Recommended PCB Pattern

Unit:m/m

A	B	C	D	E	L	G	H
3.0 \pm 0.2	3.0 \pm 0.2	1.02 Max.	1.0 Ref.	1.0 Ref.	3.2 Ref.	1.0 Ref.	3.2 Ref.

3. MATERIALS :



(a) Core : Ferrite Core

(b) Coating : Epoxy with magnetic powder

(c) Termination : Tin Pb Free

(d) Wire : Enameled Copper Wire

Exposed wire tolerance limit of coating resin part on product side.

Size of exposed wire occurring to coating resin is specified below.

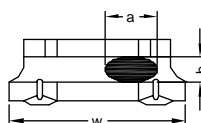
1. Width direction (dimension a) : Acceptable when $a \leq w/2$

Nonconforming when $a > w/2$

2. Length direction (dimension b) : Dimension b is not specified.

3. The total area of exposed wire occurring to each sides is

not greater than 50% of coating resin area, and is acceptable.



NOTE : Specifications subject to change without notice. Please check our website for latest information.



RoHS Compliant



SUPERWORLD ELECTRONICS (S) PTE LTD

16.01.2014

PG. 1

4. GENERAL SPECIFICATION :

- a) ambient temp. : 25° C
- b) Isat : Based on inductance change ($\Delta L/L_0$: $\leq -30\%$)
- c) Irms : Based on temperature rise (ΔT : 40°C) Max
- d) Operating temp. : -55° C to 125° C (for products in unopened tape package, less than 40° C)

5. ELECTRICAL CHARACTERISTICS :

Part No.	Inductance (μ H)	Test Frequency (Hz)	DCR (Ω) $\pm 20\%$	Isat (A) Typ.	Irms (A) Typ.
SDS3010D100MF	10 $\pm 20\%$	0.1V/1M	0.350	0.63	0.80
SDS3010D220MF	22 $\pm 20\%$	0.1V/1M	0.750	0.43	0.60



RoHS Compliant

NOTE : Specifications subject to change without notice. Please check our website for latest information.

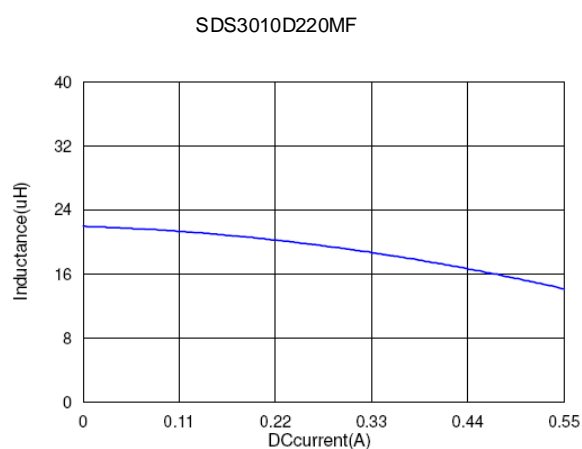
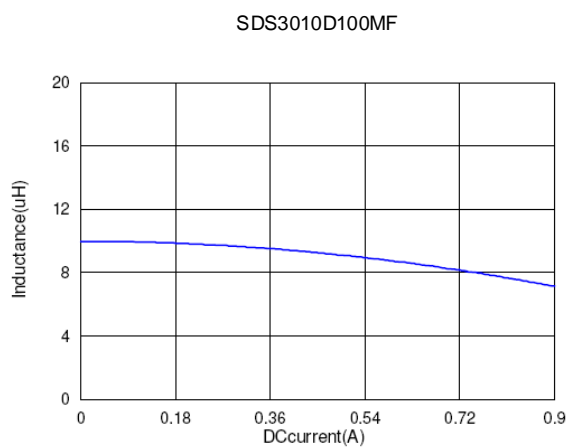
16.01.2014



SUPERWORLD ELECTRONICS (S) PTE LTD

PG. 2

6. CHARACTERISTICS CURVES :



NOTE : Specifications subject to change without notice. Please check our website for latest information.



RoHS Compliant

16.01.2014



SUPERWORLD ELECTRONICS (S) PTE LTD

7. RELIABILITY AND TEST CONDITION :

ITEM	PERFORMANCE	TEST CONDITION								
Electrical Characteristics Test										
Inductance L	Refer to standard electrical characteristics list	Agilent-4291, Agilent-4287								
Q		Agilent-4192, Agilent-4285								
SRF		Agilent-4291								
DC Resistance		Agilent-4338								
Rated Current	Base on temp. rise & $\Delta L/L_0 \leq 30\%$.	Saturation DC Current (Isat) will cause L0 to drop approximately $\Delta L(\%)$.								
Temperature Rise Test	ΔT 40°CMax	Heat Rated Current (Irms) will cause the coil temperature rise approximately $\Delta T(^{\circ}\text{C})$ without core loss. 1.Applied the allowed DC current. 2.Temperature measured by digital surface thermometer								
Mechanical Performance Test										
Solder Heat Resistance	Appearance : No damage. Inductance : within \pm 10% of initial value Q : Shall not exceed the specification value. RDC : within \pm 15% of initial value and shall not exceed the specification value	<table><tr><td>Temperature ($^{\circ}$ C)</td><td>Time (s)</td><td>Temperature ramp/immersion and emersion rate</td><td>Number of heat cycles</td></tr><tr><td>260\pm 5 (solder temp)</td><td>10\pm 1</td><td>25mm/s\pm 6 mm/s</td><td>1</td></tr></table> Depth: completely cover the termination	Temperature ($^{\circ}$ C)	Time (s)	Temperature ramp/immersion and emersion rate	Number of heat cycles	260 \pm 5 (solder temp)	10 \pm 1	25mm/s \pm 6 mm/s	1
Temperature ($^{\circ}$ C)	Time (s)	Temperature ramp/immersion and emersion rate	Number of heat cycles							
260 \pm 5 (solder temp)	10 \pm 1	25mm/s \pm 6 mm/s	1							
Solderability Test	More than 95% of terminal electrode should be covered with solder.	Preheat : 150 $^{\circ}$ C,60sec Solder : Sn99.5%-Cu0. 5% Temperature : 245 \pm 5 $^{\circ}$ C Flux for lead free : Rosin. 9.5% Dip time : 4 \pm 1sec Depth : completely cover the termination								
Reliability Test										
Life Test	Appearance : No damage. Inductance : within \pm 10% of initial value Q : Shall not exceed the specification value. RDC : within \pm 15% of initial value and shall not exceed the specification value	Preconditioning:Run through IR reflow for 2 times.(IPC/ JEDEC J-STD-020DCclassification Reflow Profiles Temperature : 85 \pm 2 $^{\circ}$ C(Inductor) Applied current : rated current Duration : 1000 \pm 12hrs Measured at room temperature after placing for 24 \pm 2 hrs								
Thermal shock		Preconditioning:Run through IR reflow for 2 times.(IPC/ JEDEC J-STD-020DCclassification Reflow Profiles Step1 : -40 \pm 2 $^{\circ}$ C 30 \pm 5min Step2 : 25 \pm 2 $^{\circ}$ C \leq 0.5min Step3 : 105 \pm 2 $^{\circ}$ C 30 \pm 5min Number of cycles : 500 Measured at room fempraturc after placing for 24 \pm 2 hrs								
Humidity Resistance Test		Preconditioning:Run through IR reflow for 2 times.(IPC/ JEDEC J-STD-020DCclassification Reflow Profiles Humidity : 85 \pm 2% R.H Temperature : 85 $^{\circ}$ C \pm 2 $^{\circ}$ C Duration : 1000hrs Min. with 100% rated current Measured at room temperature after placing for 24 \pm 2 hrs								
Vibration Test		Preconditioning:Run through IR reflow for 2 times.(IPC/ JEDEC J-STD-020DCclassification Reflow Profiles Oscillation Frequency : 10 \sim 2K \sim 10Hz for 20 minutes Equipment : Vibration checker Total Amplitude : 1.52mm \pm 10% Testing Time : 12 hours(20 minutes, 12 cycles each of 3 orientations)								

NOTE : Specifications subject to change without notice. Please check our website for latest information.

16.01.2014



SUPERWORLD ELECTRONICS (S) PTE LTD

PG. 4

8. SOLDERING AND MOUNTING :

8-1. Soldering

Mildly activated rosin fluxes are preferred. Our terminations are suitable for all wave and re-flow soldering systems. If hand soldering cannot be avoided, the preferred technique is the utilization of hot air soldering tools.

8-1.1 Lead Free Solder Re-flow :

Recommended temperature profiles for re-flow soldering in Figure 1.

8-1.2 Soldering Iron (Figure 2) :

Products attachment with soldering iron is discouraged due to the inherent process control limitations. In the event that a soldering iron must be employed the following precautions are recommended.

Note :

- a) Preheat circuit and products to 150° C.
- b) 355° C tip temperature (max)
- c) Never contact the ceramic with the iron tip
- d) 1.0mm tip diameter (max)
- e) Use a 20 watt soldering iron with tip diameter of 1.0mm
- f) Limit soldering time to 4-5 secs.

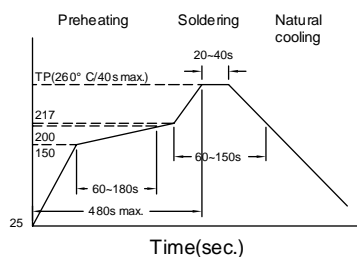


Figure 1. Re-flow Soldering : 3 times max.

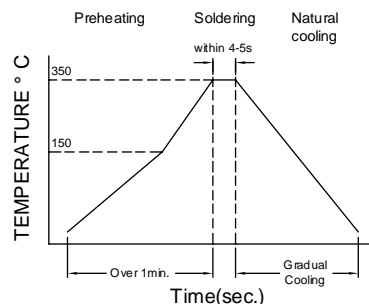


Figure 2. Iron Soldering : 1 times max.



RoHS Compliant

NOTE : Specifications subject to change without notice. Please check our website for latest information.

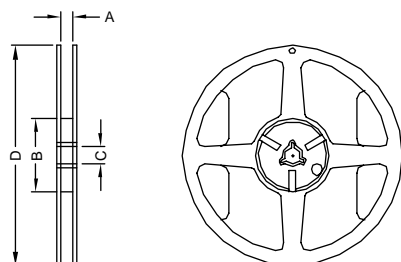
16.01.2014



SUPERWORLD ELECTRONICS (S) PTE LTD

9. PACKAGING INFORMATION :

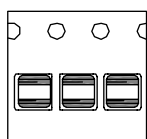
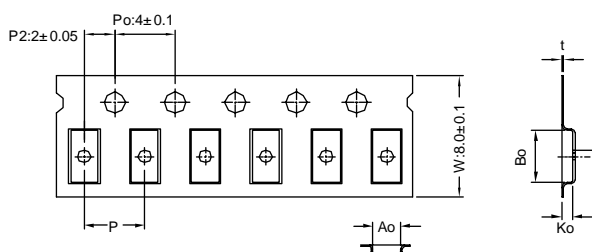
9-1. Reel Dimension



7" x 8mm

Type	A(mm)	B(mm)	C(mm)	D(mm)
7" x 8mm	8.4±1.0	50 Min.	13±0.8	178±2

9-2 Tape Dimension / 8mm



Bottom View

Series	Ao(mm)	Bo(mm)	Ko(mm)	P(mm)	t(mm)
SDS3010D	3.2±0.05	3.2±0.05	1.20±0.2	4.0±0.05	0.23±0.05

9-3. Packaging Quantity

Size	SDS3010D
Chip / Reel	2000



RoHS Compliant

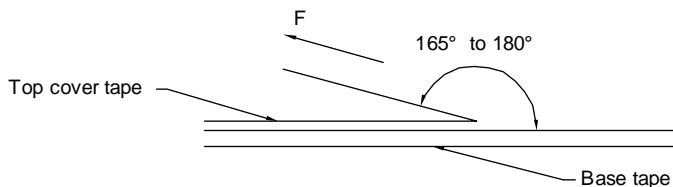
NOTE : Specifications subject to change without notice. Please check our website for latest information.

16.01.2014



SUPERWORLD ELECTRONICS (S) PTE LTD

9-4. Tearing Off Force



The force for tearing off cover tape is 15 to 80 grams in the arrow direction under the following conditions.

Room Temp. (° C)	Room Humidity (%)	Room atm (hPa)	Tearing Speed (mm/min)
5~35	45~85	860~1060	300

Application Notice

1. Storage Conditions :

To maintain the solderability of terminal electrodes :

- Temperature and humidity conditions : Less than 40° C and 60% RH.
- Recommended products should be used within 12 months from the time of delivery.
- The packaging material should be kept where no chlorine or sulfur exists in the air.

2. Transportation :

- Products should be handled with care to avoid damage or contamination from perspiration and skin oils.
- The use of tweezers or vacuum pick up is strongly recommended for individual components.
- Bulk handling should ensure that abrasion and mechanical shock are minimized.



RoHS Compliant

NOTE : Specifications subject to change without notice. Please check our website for latest information.

16.01.2014



SUPERWORLD ELECTRONICS (S) PTE LTD

PG. 7