

1. PART NO. EXPRESSION :

SCI1008S-5N6KF

(a) (b) (c) (d) (e)(f)

(a) Series code

(b) Dimension code

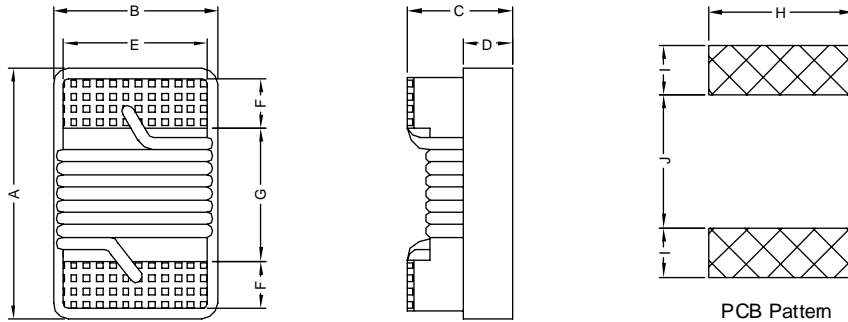
(c) Type code : S (Standard)

(d) Inductance code : 5N6 = 5.6nH

(e) Tolerance code : G = ±2%, J = ±5%, K = ±10%

(f) F : RoHS Compliant

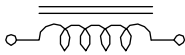
2. CONFIGURATION & DIMENSIONS :



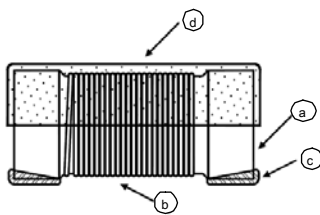
Unit: m/m

A	B	C	D	E	F	G	H	I	J
2.92 Max.	2.79 Max.	2.13 Max.	0.65 Ref.	2.03 Ref.	0.51 Ref.	1.52 Ref.	2.54 Ref.	1.02 Ref.	1.27 Ref.

3. SCHEMATIC :



4. MATERIALS :



(a) Ceramic Core

(b) Magnet Wire

(c) Electrode (Ag/Pd+Ni+Sn)

(d) UV Glue

5. GENERAL SPECIFICATION :

a) Operating temp. : -40° C to +125° C

b) Storage condition (component in its packaging)

i) Temperature : -10 to 40° C

ii) Humidity : 60%



RoHS Compliant

NOTE : Specifications subject to change without notice. Please check our website for latest information.

03.02.2015



SUPERWORLD ELECTRONICS (S) PTE LTD

6. ELECTRICAL CHARACTERISTICS :

Part No.	Tolerance Available	L (nH)	Test Freq (MHz)	Q Min.	Q Test Freq (MHz)	SRF (MHz) Min.	DCR (Ω) Max.	IDC (mA) Max.
SCI1008S-5N6 \square F	K, J	5.6	50	50	1500	4000	0.150	1000
SCI1008S-10N \square F	K, J, G	10	50	50	500	4100	0.080	1000
SCI1008S-12N \square F	K, J, G	12	50	50	500	3300	0.090	1000
SCI1008S-15N \square F	K, J, G	15	50	50	500	2500	0.110	1000
SCI1008S-18N \square F	K, J, G	18	50	50	350	2400	0.120	1000
SCI1008S-22N \square F	K, J, G	22	50	55	350	2400	0.120	1000
SCI1008S-24N \square F	K, J, G	24	50	55	350	1900	0.130	1000
SCI1008S-27N \square F	K, J, G	27	50	55	350	1600	0.130	1000
SCI1008S-33N \square F	K, J, G	33	50	60	350	1600	0.140	1000
SCI1008S-36N \square F	K, J, G	36	50	60	350	1600	0.150	1000
SCI1008S-39N \square F	K, J, G	39	50	60	350	1500	0.150	1000
SCI1008S-47N \square F	K, J, G	47	50	65	350	1500	0.160	1000
SCI1008S-56N \square F	K, J, G	56	50	65	350	1300	0.180	1000
SCI1008S-62N \square F	K, J, G	62	50	65	350	1250	0.200	1000
SCI1008S-68N \square F	K, J, G	68	50	65	350	1300	0.200	1000
SCI1008S-75N \square F	K, J, G	75	50	60	350	1100	0.210	1000
SCI1008S-82N \square F	K, J, G	82	50	60	350	1000	0.220	1000
SCI1008S-91N \square F	K, J, G	91	50	50	350	1000	0.450	1000
SCI1008S-R10 \square F	K, J, G	100	25	60	350	1000	0.560	650
SCI1008S-R12 \square F	K, J, G	120	25	60	350	950	0.630	650
SCI1008S-R15 \square F	K, J, G	150	25	45	100	850	0.700	800
SCI1008S-R18 \square F	K, J, G	180	25	45	100	750	0.770	620
SCI1008S-R22 \square F	K, J, G	220	25	45	100	700	0.840	500
SCI1008S-R24 \square F	K, J, G	240	25	45	100	650	0.880	500
SCI1008S-R27 \square F	K, J, G	270	25	45	100	600	0.910	690



RoHS Compliant

NOTE : Specifications subject to change without notice. Please check our website for latest information.

03.02.2015



SUPERWORLD ELECTRONICS (S) PTE LTD

6. ELECTRICAL CHARACTERISTICS :

Part No.	Tolerance Available	L (nH)	Test Freq (MHz)	Q Min.	Q Test Freq (MHz)	SRF (MHz) Min.	DCR (Ω) Max.	IDC (mA) Max.
SCI1008S-R30□F	K, J, G	300	25	45	100	585	1.00	450
SCI1008S-R33□F	K, J, G	330	25	45	100	570	1.05	450
SCI1008S-R36□F	K, J, G	360	25	45	100	530	1.10	470
SCI1008S-R39□F	K, J, G	390	25	45	100	500	1.12	630
SCI1008S-R43□F	K, J, G	430	25	45	100	480	1.15	470
SCI1008S-R47□F	K, J, G	470	25	45	100	450	1.19	470
SCI1008S-R56□F	K, J, G	560	25	45	100	415	1.33	580
SCI1008S-R62□F	K, J, G	620	25	45	100	375	1.40	300
SCI1008S-R68□F	K, J, G	680	25	45	100	375	1.47	540
SCI1008S-R75□F	K, J, G	750	25	45	100	360	1.54	360
SCI1008S-R82□F	K, J, G	820	25	45	100	350	1.61	400
SCI1008S-R91□F	K, J, G	910	25	35	50	320	1.68	380
SCI1008S-1R0□F	K, J, G	1000	25	35	50	290	1.75	370
SCI1008S-1R2□F	K, J, G	1200	7.9	35	50	250	2.00	310
SCI1008S-1R5□F	K, J, G	1500	7.9	28	50	200	2.30	330
SCI1008S-1R8□F	K, J, G	1800	7.9	28	50	160	2.60	300
SCI1008S-2R2□F	K, J, G	2200	7.9	28	50	160	2.80	280
SCI1008S-2R7□F	K, J, G	2700	7.9	22	25	140	3.20	290
SCI1008S-3R3□F	K, J, G	3300	7.9	22	25	110	3.40	290
SCI1008S-3R9□F	K, J, G	3900	7.9	18	25	100	3.60	260
SCI1008S-4R7□F	K, J, G	4700	7.9	18	25	90	4.00	260
SCI1008S-5R6□F	K, J, G	5600	7.9	16	7.96	20	4.00	240
SCI1008S-6R8□F	K, J, G	6800	7.9	15	7.96	40	4.90	200
SCI1008S-8R2□F	K, J, G	8200	7.9	15	7.96	25	6.00	170
SCI1008S-100□F	K, J, G	10000	2.52	15	7.96	20	9.00	150
SCI1008S-120□F	K, J, G	12000	2.52	15	7.96	18	10.5	130
SCI1008S-150□F	K, J, G	15000	2.52	15	7.96	15	11.5	120

Inductance tolerance :

- : G : $\pm 2\%$
- J : $\pm 5\%$
- K : $\pm 10\%$



RoHS Compliant

NOTE : Specifications subject to change without notice. Please check our website for latest information.

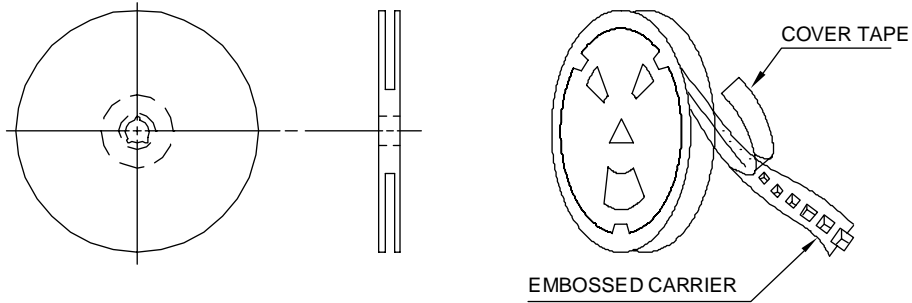
03.02.2015



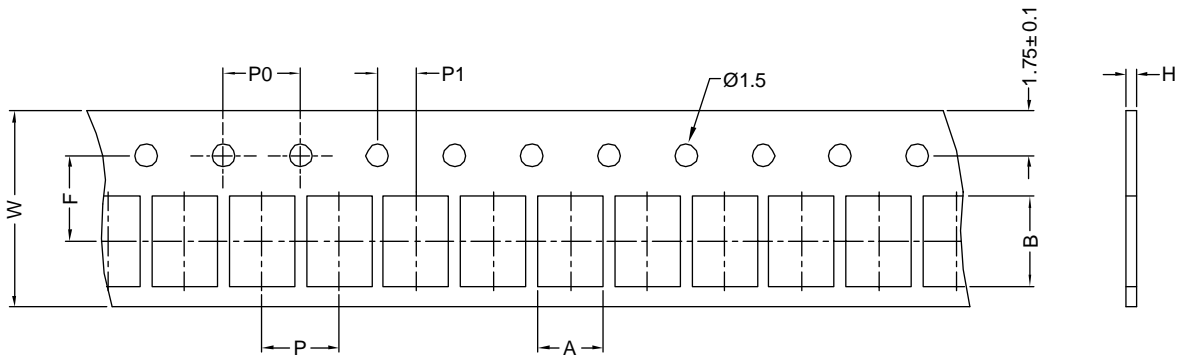
SUPERWORLD ELECTRONICS (S) PTE LTD

7. PACKAGING INFORMATION :

Reel Configuration :



Paper Tape :



Dimension (unit: mm)

Series	A	B	H	F	P	P0	P1	W	Qty
SCI0402S	0.72	1.19	0.60	3.50	2.00	4.00	2.00	8.00	4000pcs / reel
SCI0603S	1.35	1.95	0.95	3.50	4.00	4.00	2.00	8.00	4000pcs / reel



RoHS Compliant

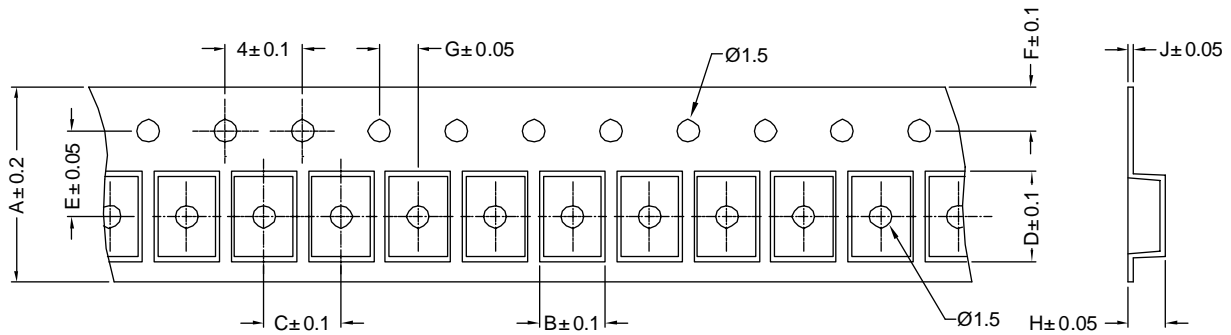
NOTE : Specifications subject to change without notice. Please check our website for latest information.

03.02.2015



SUPERWORLD ELECTRONICS (S) PTE LTD

Embossed Carrier Tape :



Dimension (unit: mm)

Series	A	B	C	D	E	F	G	H	J	Qty
SCI0805S	8	1.85	4	2.30	3.5	1.75	2	1.45	0.23	2000pcs / reel
SCI0805LP	8	1.80	4	2.30	3.5	1.75	2	0.90	0.23	2000pcs / reel
SCI0805HQ	8	1.85	4	2.30	3.5	1.75	2	1.45	0.23	2000pcs / reel
SCI1008S	8	2.70	4	2.80	3.5	1.75	2	2.00	0.23	2000pcs / reel
SCI1008LP	8	2.70	4	2.80	3.5	1.75	2	1.50	0.23	2000pcs / reel
SCI1008HQ	8	2.70	4	2.80	3.5	1.75	2	2.00	0.23	2000pcs / reel



RoHS Compliant

NOTE : Specifications subject to change without notice. Please check our website for latest information.

03.02.2015



SUPERWORLD ELECTRONICS (S) PTE LTD