

### 1. PART NO. EXPRESSION :

**SCI0805LP-1N8KF**

(a) (b) (c) (d) (e)(f)

(a) Series code

(b) Dimension code

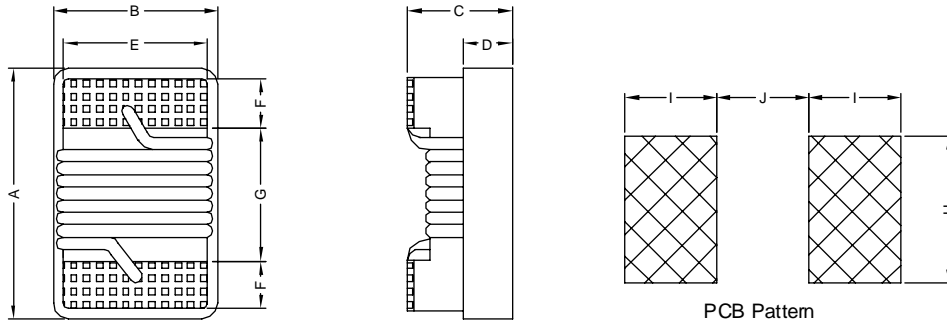
(c) Type code : LP ( Low Profile )

(d) Inductance code : 1N8 = 1.8nH

(e) Tolerance code : G = ±2%, J = ±5%, K = ±10%

(f) F : RoHS Compliant

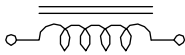
### 2. CONFIGURATION & DIMENSIONS :



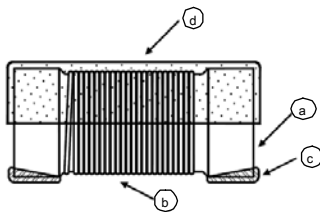
Unit:m/m

A	B	C	D	E	F	G	H	I	J
2.29 Max.	1.73 Max.	1.03 Max.	0.51 Ref.	1.27 Ref.	0.44 Ref.	1.02 Ref.	1.78 Ref.	1.02 Ref.	0.76 Ref.

### 3. SCHEMATIC :



### 4. MATERIALS :



(a) Ceramic Core

(b) Magnet Wire

(c) Electrode (Ag/Pd+Ni+Sn)

(d) UV Glue



**RoHS Compliant**

NOTE : Specifications subject to change without notice. Please check our website for latest information.

06.02.2015



**SUPERWORLD ELECTRONICS (S) PTE LTD**

### 5. GENERAL SPECIFICATION :

- a) Operating temp. : -40° C to +125° C
- b) Storage condition (component in its packaging)
  - i) Temperature : -10 to 40° C
  - ii) Humidity : 60%

### 6. ELECTRICAL CHARACTERISTICS :

Part No.	Tolerance Available	L (nH)	Test Freq (MHz)	Q Min.	Q Test Freq (MHz)	SRF (MHz) Min.	DCR (Ω) Max.	IDC (mA) Max.
SCI0805LP-1N8□F	K	1.8	250	55	1500	9400	0.030	800
SCI0805LP-3N9□F	K, J	3.9	250	60	1000	6100	0.060	800
SCI0805LP-4N7□F	K, J	4.7	250	50	1000	5500	0.060	800
SCI0805LP-6N8□F	K, J	6.8	250	50	1000	5500	0.080	800
SCI0805LP-8N2□F	K, J	8.2	250	50	1000	4800	0.080	800
SCI0805LP-10N□F	K, J, G	10	250	55	750	3300	0.080	800
SCI0805LP-12N□F	K, J, G	12	250	55	750	3800	0.100	800
SCI0805LP-15N□F	K, J, G	15	250	50	500	2950	0.100	800
SCI0805LP-18N□F	K, J, G	18	250	50	500	3100	0.130	800
SCI0805LP-22N□F	K, J, G	22	250	50	500	2900	0.150	800
SCI0805LP-27N□F	K, J, G	27	250	50	500	2450	0.230	600
SCI0805LP-33N□F	K, J, G	33	250	50	500	2350	0.280	600
SCI0805LP-39N□F	K, J, G	39	250	50	500	2200	0.330	600
SCI0805LP-47N□F	K, J, G	47	200	50	500	2000	0.390	600
SCI0805LP-56N□F	K, J, G	56	200	50	500	1850	0.390	500
SCI0805LP-68N□F	K, J, G	68	200	50	500	1500	0.400	500
SCI0805LP-82N□F	K, J, G	82	150	50	500	1500	0.440	500
SCI0805LP-R10□F	K, J, G	100	150	50	500	1200	0.640	400
SCI0805LP-R12□F	K, J, G	120	150	40	250	1150	0.680	300
SCI0805LP-R15□F	K, J, G	150	150	40	250	1050	0.800	300
SCI0805LP-1R0□F	K, J, G	1000	25	16	50	80	3.50	170

Inductance tolerance :

- : G : ±2%
- J : ±5%
- K : ±10%



**RoHS Compliant**

NOTE : Specifications subject to change without notice. Please check our website for latest information.

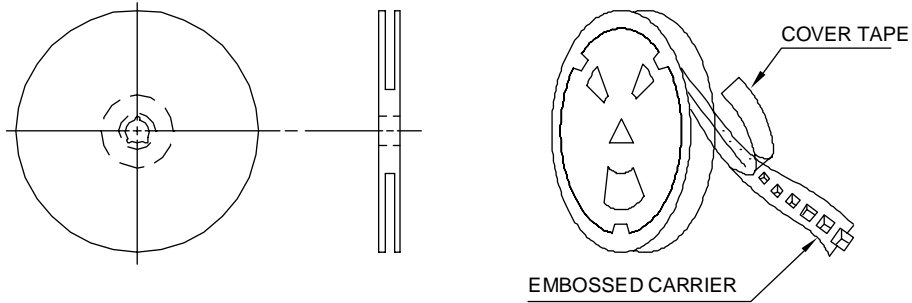
06.02.2015



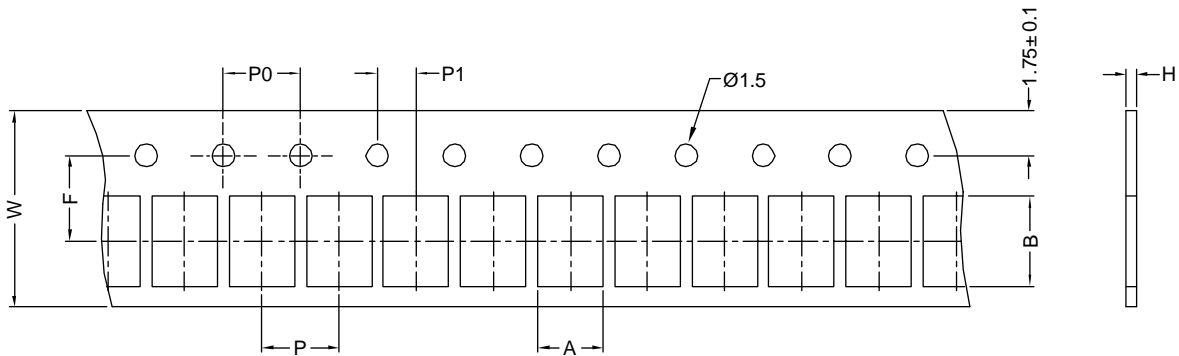
**SUPERWORLD ELECTRONICS (S) PTE LTD**

### 7. PACKAGING INFORMATION :

Reel Configuration :



Paper Tape :



Dimension (unit: mm)

Series	A	B	H	F	P	P0	P1	W	Qty
SCI0402S	0.72	1.19	0.60	3.50	2.00	4.00	2.00	8.00	4000pcs / reel
SCI0603S	1.35	1.95	0.95	3.50	4.00	4.00	2.00	8.00	4000pcs / reel



**RoHS Compliant**

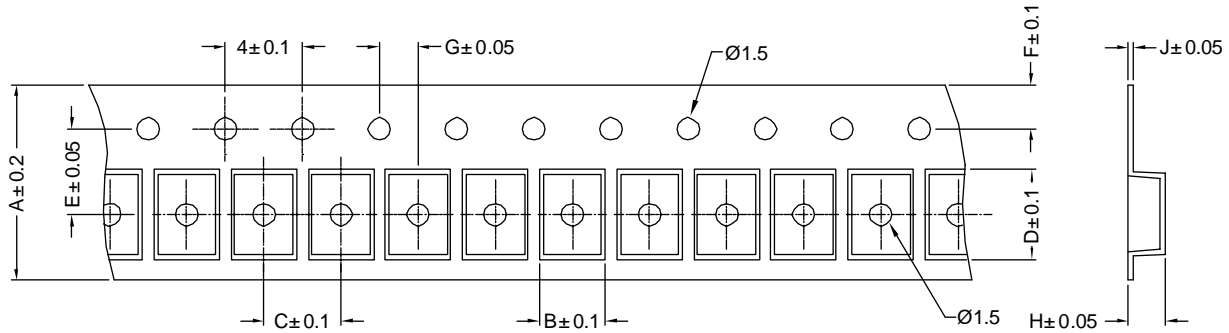
NOTE : Specifications subject to change without notice. Please check our website for latest information.

06.02.2015



**SUPERWORLD ELECTRONICS (S) PTE LTD**

Embossed Carrier Tape :



Dimension (unit: mm)

Series	A	B	C	D	E	F	G	H	J	Qty
SCI0805S	8	1.85	4	2.30	3.5	1.75	2	1.45	0.23	2000pcs / reel
SCI0805LP	8	1.80	4	2.30	3.5	1.75	2	0.90	0.23	2000pcs / reel
SCI0805HQ	8	1.85	4	2.30	3.5	1.75	2	1.45	0.23	2000pcs / reel
SCI1008S	8	2.70	4	2.80	3.5	1.75	2	2.00	0.23	2000pcs / reel
SCI1008LP	8	2.70	4	2.80	3.5	1.75	2	1.50	0.23	2000pcs / reel
SCI1008HQ	8	2.70	4	2.80	3.5	1.75	2	2.00	0.23	2000pcs / reel



**RoHS Compliant**

NOTE : Specifications subject to change without notice. Please check our website for latest information.

06.02.2015



**SUPERWORLD ELECTRONICS (S) PTE LTD**