

### 1. PART NO. EXPRESSION :

P D B 1 7 0 4 1 0 1 M Z F  
 (a) (b) (c) (d)(e)(f)

(a) Series code

(b) Dimension code

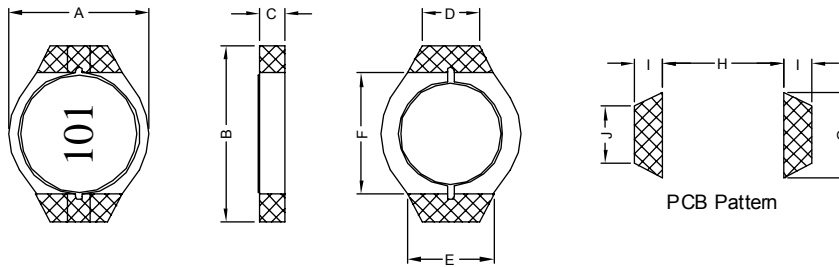
(c) Inductance code : 101 = 100.0uH

(d) Tolerance code : M = ±20%

(e) Z : Standard part

(f) F : RoHS Compliant

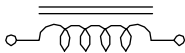
### 2. CONFIGURATION & DIMENSIONS :



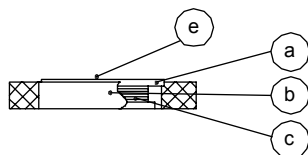
Unit:m/m

A	B	C	D	E	F	G	H	I	J
5.50 Max.	6.60 Max.	1.00 Max.	2.50±0.2	3.40±0.3	4.90±0.3	3.80 Ref.	4.70 Ref.	1.10 Ref.	2.50 Ref.

### 3. SCHEMATIC :



### 4. MATERIALS :



(a) Core

(b) Base

(c) Wire

(d) Adhesive

(e) Ink

### 5. GENERAL SPECIFICATION :

- a) Temp. rise : 40° C Max. at 1ms
- b)  $\Delta L/L_{0A}$  = 10% Max. at 1s
- c) Operating temp. : -40° C to +125° C
- d) Storage condition (component in its packaging)
  - i) Temperature : -10 to 40° C
  - ii) Humidity : 60%
- e) Resistance to solder heat : 260° C.10 secs



**RoHS Compliant**

NOTE : Specifications subject to change without notice. Please check our website for latest information.

14.11.2014



**SUPERWORLD ELECTRONICS (S) PTE LTD**

## 6. ELECTRICAL CHARACTERISTICS :

Part No.	Inductance ( $\mu$ H)	Test Frequency ( Hz )	SRF ( MHz ) Typ.	RDC ( $\Omega$ ) Max.	Isat ( A )	Irms ( A )
PDB17041R2MZF	1.2 $\pm$ 20%	0.1V/100K	190.0	0.08	2.10	1.70
PDB17041R5MZF	1.5 $\pm$ 20%	0.1V/100K	140.0	0.10	1.90	1.50
PDB17042R2MZF	2.2 $\pm$ 20%	0.1V/100K	115.0	0.12	1.60	1.40
PDB17043R3MZF	3.3 $\pm$ 20%	0.1V/100K	90.0	0.16	1.30	1.20
PDB17044R7MZF	4.7 $\pm$ 20%	0.1V/100K	88.0	0.20	1.10	1.10
PDB17046R8MZF	6.8 $\pm$ 20%	0.1V/100K	66.0	0.32	0.90	0.85
PDB1704100MZF	10.0 $\pm$ 20%	0.1V/100K	55.0	0.41	0.80	0.75
PDB1704150MZF	15.0 $\pm$ 20%	0.1V/100K	42.0	0.55	0.65	0.60
PDB1704220MZF	22.0 $\pm$ 20%	0.1V/100K	38.0	0.85	0.50	0.52
PDB1704330MZF	33.0 $\pm$ 20%	0.1V/100K	29.0	1.30	0.40	0.42
PDB1704470MZF	47.0 $\pm$ 20%	0.1V/100K	22.0	1.80	0.35	0.36
PDB1704680MZF	68.0 $\pm$ 20%	0.1V/100K	18.0	2.50	0.30	0.30
PDB1704101MZF	100.0 $\pm$ 20%	0.1V/100K	14.0	3.50	0.25	0.26
PDB1704151MZF	150.0 $\pm$ 20%	0.1V/100K	12.0	5.00	0.18	0.21
PDB1704221MZF	220.0 $\pm$ 20%	0.1V/100K	10.0	7.00	0.16	0.18
PDB1704331MZF	330.0 $\pm$ 20%	0.1V/100K	8.0	15.00	0.13	0.13



**RoHS Compliant**

NOTE : Specifications subject to change without notice. Please check our website for latest information.

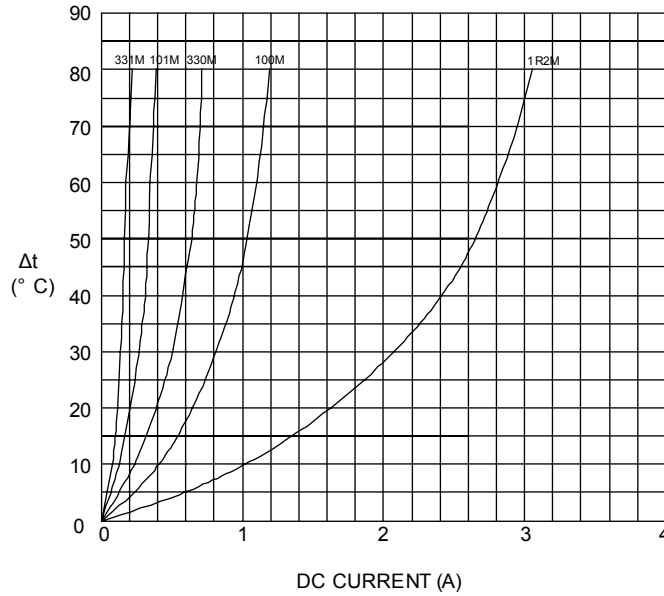
14.11.2014



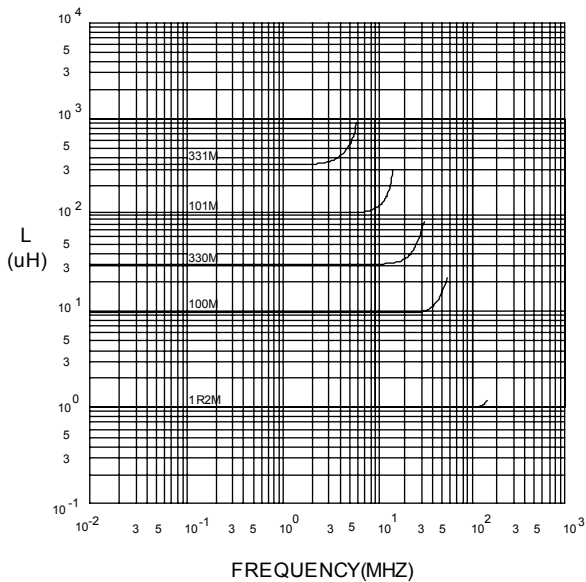
**SUPERWORLD ELECTRONICS (S) PTE LTD**

7. CHARACTERISTICS CURVES :

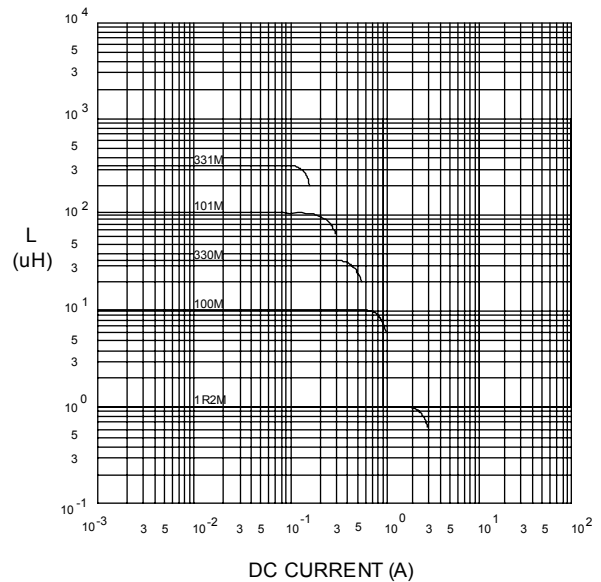
@ TEMP. RISE VS. DC SUPERPOSITION RESPONSE CURVE



@ INDUCTANCE VS. FREQUENCY RESPONSE CURVE



@ INDUCTANCE VS. DC SUPERPOSITION RESPONSE CURVE



NOTE : Specifications subject to change without notice. Please check our website for latest information.

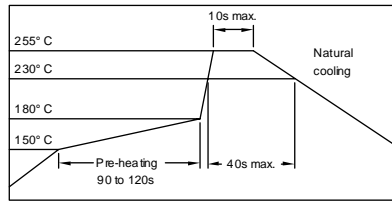


RoHS Compliant

14.11.2014

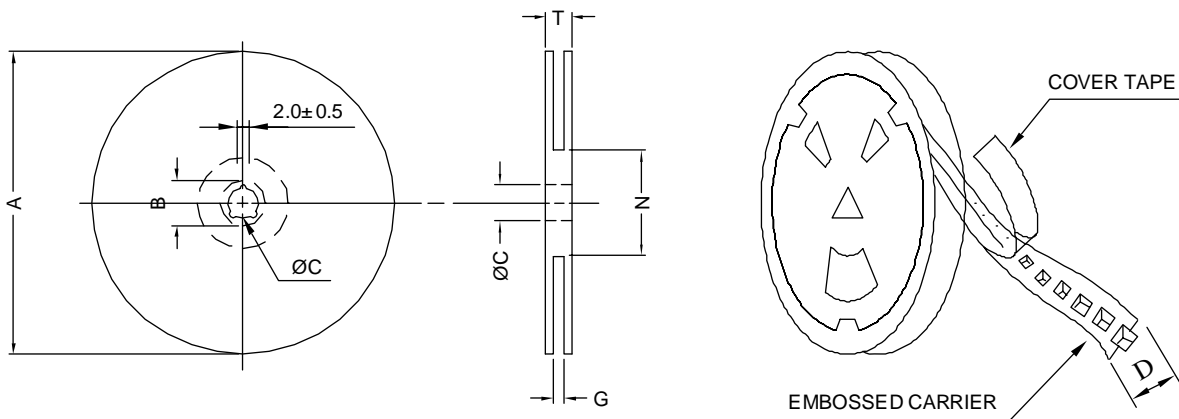


### RECOMMENDED SOLDERING CONDITIONS REFLOW SOLDERINGS

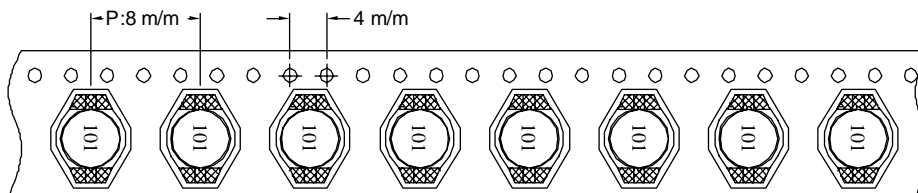


### 8. PACKAGING INFORMATION :

#### ( 1 ) CONFIGURATION



\* CARRIER TAPE WIDTH : D



#### ( 2 ) DIMENSIONS

Unit:m/m

STYLE	A	B	C	D	G	N	T
7-16	178	21±0.8	7±0.5	16	18 +0	50 -0	22.4

#### ( 3 ) QTY & G.W. PER PACKAGE

SERIES	INNER : REEL			OUTER : CARTON		
	QTY (PCS)	G.W. (gw)	STYLE	QTY (PCS)	G.W. (Kg)	SIZE (cm)
PDB1704	1000	350	7-16	5000	5.30	21 x 20 x 20



**RoHS Compliant**

NOTE : Specifications subject to change without notice. Please check our website for latest information.

14.11.2014



**SUPERWORLD ELECTRONICS (S) PTE LTD**