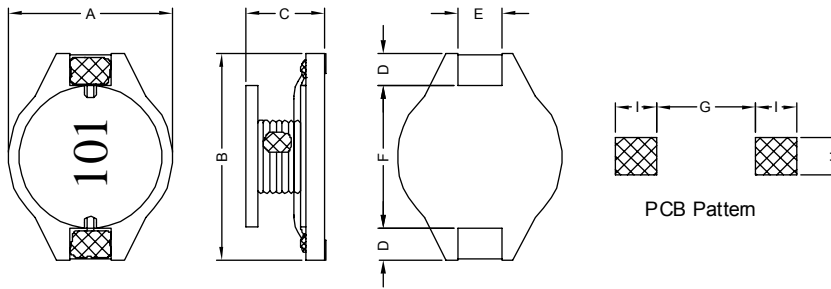


### 1. PART NO. EXPRESSION :

PDB1011101MZ F  
 (a) (b) (c) (d)(e)(f)

- (a) Series code
- (b) Dimension code
- (c) Inductance code : 101 = 100uH
- (d) Tolerance code : M = ±20%
- (e) Z : Standard part
- (f) F : RoHS Compliant

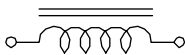
### 2. CONFIGURATION & DIMENSIONS :



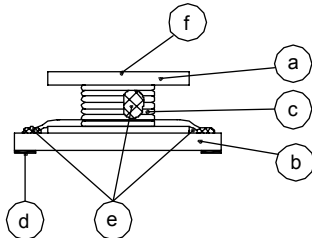
Unit:m/m

A	B	C	D	E	F	G	H	I
10.0±0.2	12.7±0.2	11.0±0.5	2.4±0.2	2.2±0.2	7.6±0.3	7.3 Ref.	2.8 Ref.	3.0 Ref.

### 3. SCHEMATIC :



### 4. MATERIALS :



- (a) Core
- (b) Base
- (c) Wire
- (d) Terminal
- (e) Adhesive
- (f) Ink

### 5. GENERAL SPECIFICATION :

- a) Temp. rise : 40° C Max. at Rated Current.
- b) Rated current : Base on Temp. Rise & ΔL/L0A = 10% Max.
- c) Operating temp. : -40° C to +85° C
- d) Storage condition (component in its packaging)
  - i) Temperature : -10 to 40° C
  - ii) Humidity : 60%
- e) Resistance to solder heat : 260° C.10 secs



**RoHS Compliant**

NOTE : Specifications subject to change without notice. Please check our website for latest information.

14.11.2014

## 6. ELECTRICAL CHARACTERISTICS :

Part No.	Inductance ( $\mu$ H)	Q Ref.	Test Frequency ( Hz )	SRF ( MHz ) Typ.	RDC ( m $\Omega$ ) Max.	IDC ( A )
PDB1011100MZF	10 $\pm$ 20%	30	1V / 100K	23.0	40	3.50
PDB1011150MZF	15 $\pm$ 20%	30	1V / 100K	14.0	50	3.20
PDB1011220MZF	22 $\pm$ 20%	40	1V / 100K	8.5	66	2.90
PDB1011330MZF	33 $\pm$ 20%	40	1V / 100K	7.0	80	2.35
PDB1011470MZF	47 $\pm$ 20%	35	1V / 100K	6.5	110	2.10
PDB1011680MZF	68 $\pm$ 20%	35	1V / 100K	4.5	170	1.90
PDB1011101MZF	100 $\pm$ 20%	30	1V / 100K	4.0	220	1.55
PDB1011151MZF	150 $\pm$ 20%	30	1V / 100K	3.0	340	1.35
PDB1011221MZF	220 $\pm$ 20%	50	1V / 100K	2.5	440	1.00
PDB1011331MZF	330 $\pm$ 20%	50	1V / 100K	2.3	700	0.90
PDB1011471MZF	470 $\pm$ 20%	45	1V / 100K	2.0	950	0.75
PDB1011681MZF	680 $\pm$ 20%	50	1V / 100K	1.5	1200	0.55
PDB1011102MZF	1000 $\pm$ 20%	50	1V / 100K	1.3	2000	0.50



RoHS Compliant

NOTE : Specifications subject to change without notice. Please check our website for latest information.

14.11.2014

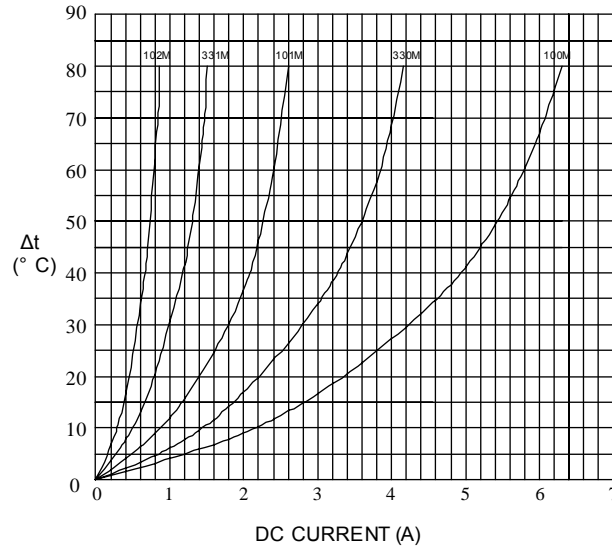


SUPERWORLD ELECTRONICS (S) PTE LTD

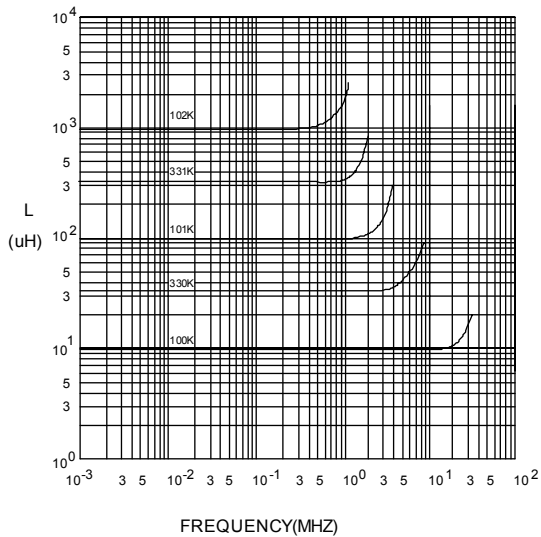
PG. 2

## 7. CHARACTERISTICS CURVES :

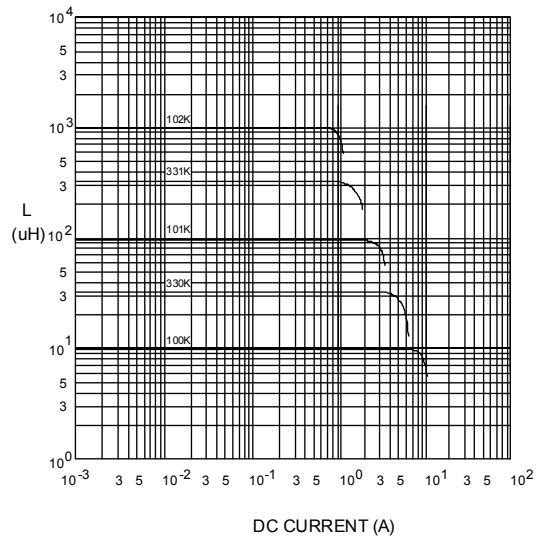
@ TEMP. RISE VS. DC SUPERPOSITION RESPONSE CURVE



@ INDUCTANCE VS. FREQUENCY RESPONSE CURVE



@ INDUCTANCE VS. DC SUPERPOSITION RESPONSE CURVE



NOTE : Specifications subject to change without notice. Please check our website for latest information.



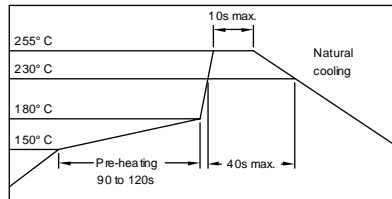
**RoHS Compliant**

14.11.2014



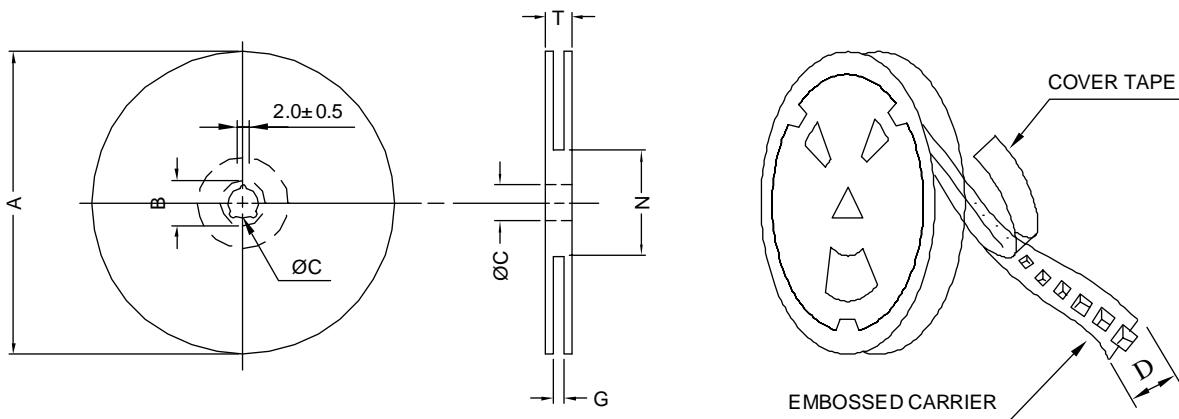
**SUPERWORLD ELECTRONICS (S) PTE LTD**

### RECOMMENDED SOLDERING CONDITIONS REFLOW SOLDERINGS

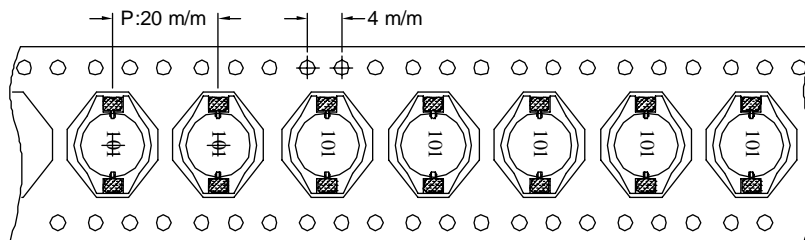


### 8. PACKAGING INFORMATION :

#### ( 1 ) CONFIGURATION



\* CARRIER TAPE WIDTH : D



#### ( 2 ) DIMENSIONS

Unit:m/m

STYLE	A	B	C	D	G	N	T
13-24	330	21±0.8	13±0.5	24	26 <sup>-0</sup>	50 <sup>-0</sup>	30.4

#### ( 3 ) QTY & G.W. PER PACKAGE

SERIES	INNER : REEL			OUTER : CARTON		
	QTY (PCS)	G.W. (gw)	STYLE	QTY (PCS)	G.W. (Kg)	SIZE (cm)
PDB1011	225	900	13-24	900	7.1	38 x 36.5 x 21



**RoHS Compliant**

NOTE : Specifications subject to change without notice. Please check our website for latest information.

14.11.2014



**SUPERWORLD ELECTRONICS (S) PTE LTD**