

1. PART NO. EXPRESSION :

S D C 0 6 0 3 1 0 0 M Z F
 (a) (b) (c) (d)(e)(f)

(a) Series code

(d) Tolerance code : M = ±20%

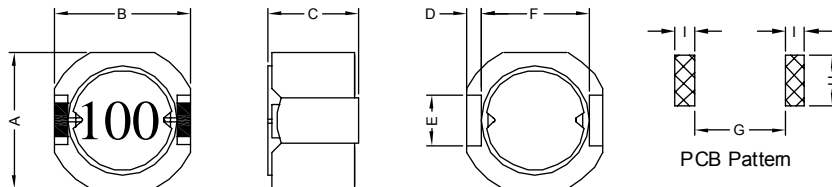
(b) Dimension code

(e) Z : Standard part

(c) Inductance code : 100 = 10.0uH

(f) F : RoHS Compliant

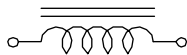
2. CONFIGURATION & DIMENSIONS :



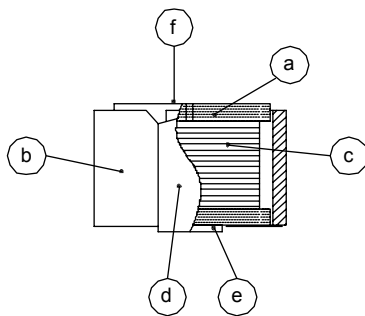
Unit:m/m

A	B	C	D	E	F	G	H	I
6.2 Max.	6.30±0.3	3.5 Max.	0.6 Typ.	2.0 Typ.	4.8 Typ.	4.6 Ref.	2.6 Ref.	1.0 Ref.

3. SCHEMATIC :



4. MATERIALS :



(a) Core

(b) Core

(c) Wire

(d) Terminal

(e) Adhesive

(f) Ink

5. GENERAL SPECIFICATION :

- a) Temp. rise : 40° C Max. at 1ms
- b) ΔL/L0A : 30% Max.at Isat
- c) Operating temp. : -40° C to +85° C
- d) Storage condition (component in its packaging)
 - i) Temperature : -10 to 40° C
 - ii) Humidity : 60%
- e) Resistance to solder heat : 260° C.10 secs



RoHS Compliant

NOTE : Specifications subject to change without notice. Please check our website for latest information.

28.11.2014



SUPERWORLD ELECTRONICS (S) PTE LTD

6. ELECTRICAL CHARACTERISTICS :

Part No.	Inductance (μ H)	Test Freq. (Hz)	RDC ($m\Omega$) Typ.	Isat (A) Max.	Irms (A) Max.
SDC06032R0MZF	2.0 \pm 20%	1V/100K	19.1	2.997	3.30
SDC06032R7MZF	2.7 \pm 20%	1V/100K	22.0	2.691	3.12
SDC06033R3MZF	3.3 \pm 20%	1V/100K	25.7	2.573	2.81
SDC06034R7MZF	4.7 \pm 20%	1V/100K	31.6	2.084	2.51
SDC06036R2MZF	6.2 \pm 20%	1V/100K	35.0	1.835	2.41
SDC06038R2MZF	8.2 \pm 20%	1V/100K	43.5	1.542	2.11
SDC0603100MZF	10.0 \pm 20%	1V/100K	49.4	1.491	1.97
SDC0603120MZF	12.0 \pm 20%	1V/100K	62.0	1.282	1.73
SDC0603150MZF	15.0 \pm 20%	1V/100K	77.0	1.103	1.54
SDC0603180MZF	18.0 \pm 20%	1V/100K	81.5	1.046	1.52
SDC0603220MZF	22.0 \pm 20%	1V/100K	106.0	0.968	1.29
SDC0603270MZF	27.0 \pm 20%	1V/100K	140.0	0.821	1.11
SDC0603330MZF	33.0 \pm 20%	1V/100K	162.0	0.755	1.02
SDC0603390MZF	39.0 \pm 20%	1V/100K	192.0	0.700	0.96
SDC0603470MZF	47.0 \pm 20%	1V/100K	209.0	0.677	0.89
SDC0603560MZF	56.0 \pm 20%	1V/100K	257.0	0.602	0.80
SDC0603680MZF	68.0 \pm 20%	1V/100K	320.0	0.556	0.71
SDC0603820MZF	82.0 \pm 20%	1V/100K	420.0	0.468	0.61
SDC0603101MZF	100.0 \pm 20%	1V/100K	477.0	0.449	0.57
SDC0603151MZF	150.0 \pm 20%	1V/100K	664.0	0.367	0.48



RoHS Compliant

NOTE : Specifications subject to change without notice. Please check our website for latest information.

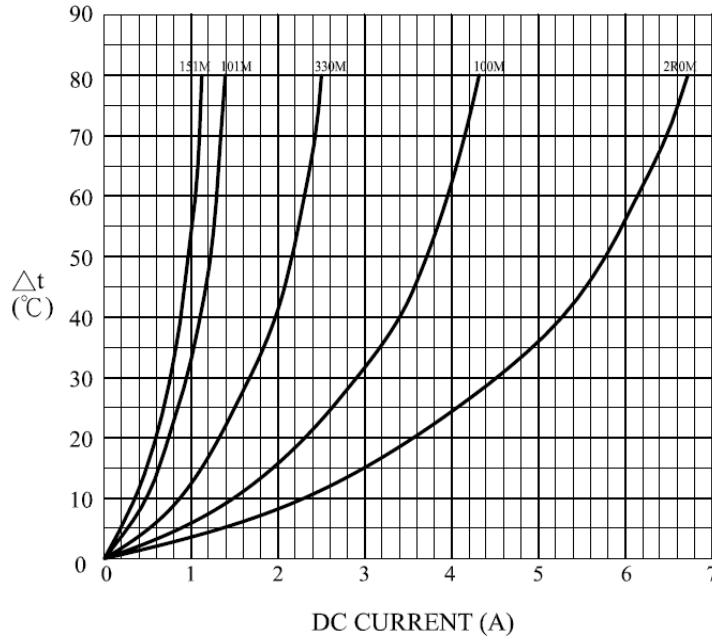
28.11.2014



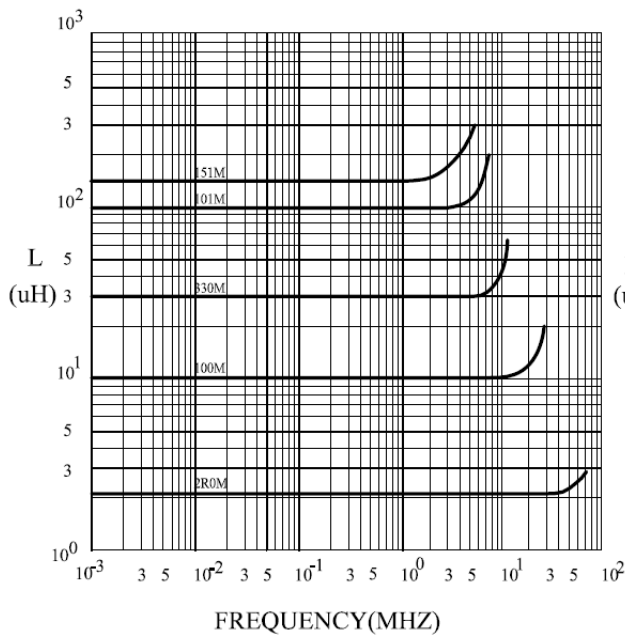
SUPERWORLD ELECTRONICS (S) PTE LTD

7. CHARACTERISTICS CURVES :

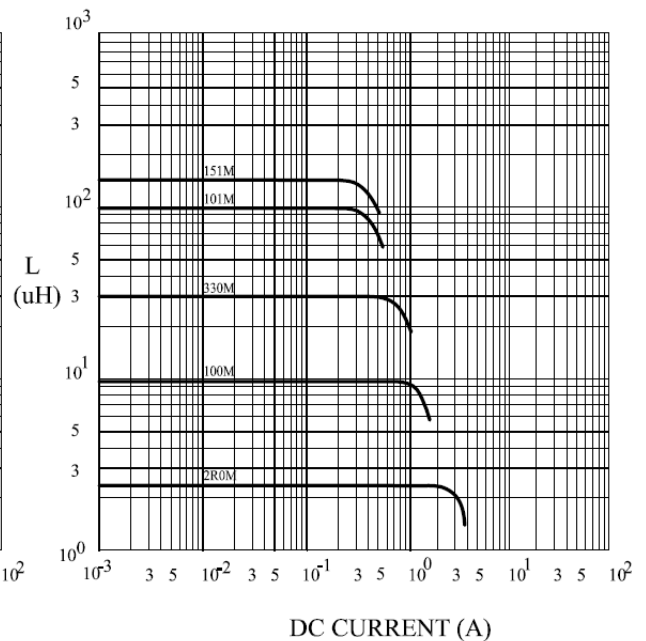
@ TEMP. RISE VS. DC SUPERPOSITION RESPONSE CURVE



@ INDUCTANCE VS. FREQUENCY RESPONSE CURVE



@ INDUCTANCE VS. DC SUPERPOSITION RESPONSE CURVE

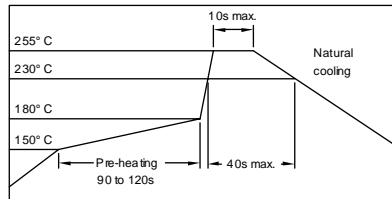


RoHS Compliant

NOTE : Specifications subject to change without notice. Please check our website for latest information.

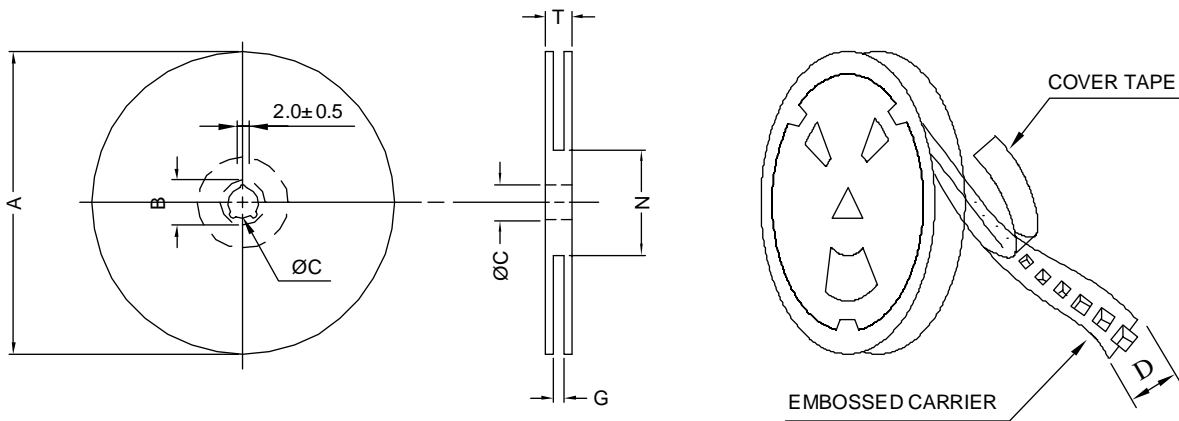


RECOMMENDED SOLDERING CONDITIONS REFLOW SOLDERINGS

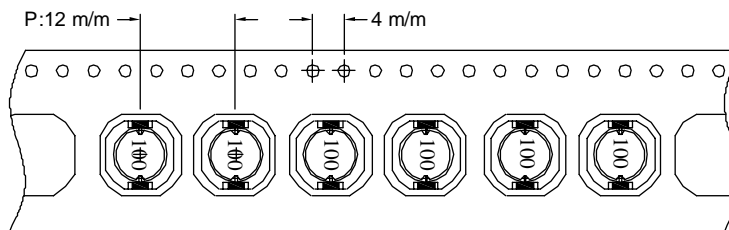


8. PACKAGING INFORMATION :

(1) CONFIGURATION



* CARRIER TAPE WIDTH : D



(2) DIMENSIONS

Unit:m/m

STYLE	A	B	C	D	G	N	T
13-16	330	21±0.8	13	16	18 ⁺⁰	50 ⁻⁰	22.4

(3) QTY & G.W. PER PACKAGE

SERIES	INNER : REEL			OUTER : CARTON		
	QTY (PCS)	G.W. (gw)	STYLE	QTY (PCS)	G.W. (Kg)	SIZE (cm)
SDC0603	1000	800	13-16	6000	8.3	40 x 40 x 24



RoHS Compliant

NOTE : Specifications subject to change without notice. Please check our website for latest information.

28.11.2014



SUPERWORLD ELECTRONICS (S) PTE LTD