

1. PART NO. EXPRESSION :

S D B 1 2 0 7 1 0 1 Y Z F

(a) (b) (c) (d)(e)(f)

(a) Series code

(b) Dimension code

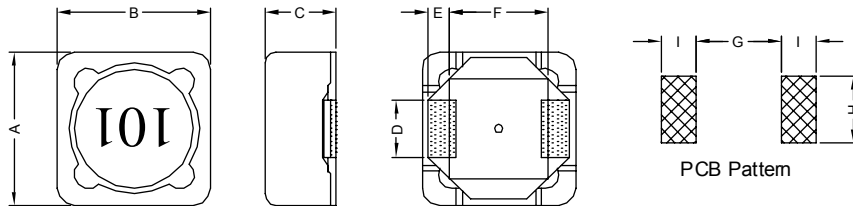
(c) Inductance code : 101 = 100.0uH

(d) Tolerance code : K = ± 10%, L = ± 15%, M = ± 20%, Y = ± 30%

(e) Z : Standard part

(f) F : RoHS Compliant

2. CONFIGURATION & DIMENSIONS :



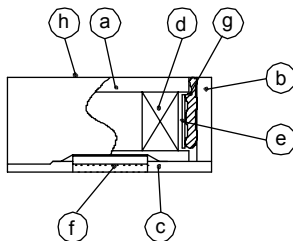
Unit: m/m

A	B	C	D	E	F	G	H	I
12.5±0.3	12.5±0.3	8.00 Max.	5.0±0.2	2.2±0.2	7.6±0.2	7.0 Ref.	5.4 Ref.	2.8 Ref.

3. SCHEMATIC :



4. MATERIALS :



(a) DR Core

(b) RI Core

(c) Base

(d) Wire

(e) Tape

(f) Terminal

(g) Adhesive

(h) Ink

5. GENERAL SPECIFICATION :

- a) Temp. rise : 40° C Max. at 1ms
- b) $\Delta L/L_{0A}$ = 20% Max. at Isat
- c) Operating temp. : -40° C to +125° C
- d) Storage condition (component in its packaging)
 - i) Temperature : -10 to 40° C
 - ii) Humidity : 60%
- e) Resistance to solder heat : 260° C.10 secs



RoHS Compliant

NOTE : Specifications subject to change without notice. Please check our website for latest information.



6. ELECTRICAL CHARACTERISTICS :

Part No.	Inductance (μ H)	Test Frequency (Hz)	RDC (m Ω) Max.	I _{rms} (A) Max.	I _{sat} (A) Max.
SDB12071R2YZF	1.2 \pm 30%	1V / 100K	7.0	8.90	9.80
SDB12072R7YZF	2.7 \pm 30%	1V / 100K	11.5	7.20	8.00
SDB12073R9YZF	3.9 \pm 30%	1V / 100K	13.5	6.90	7.50
SDB12074R7YZF	4.7 \pm 30%	1V / 100K	15.8	6.60	6.80
SDB12075R6YZF	5.6 \pm 30%	1V / 100K	17.6	6.30	6.60
SDB12077R6YZF	7.6 \pm 30%	1V / 100K	20.0	6.00	5.90
SDB1207100MZF	10.0 \pm 20%	1V / 1K	21.6	5.20	5.40
SDB1207120MZF	12.0 \pm 20%	1V / 1K	24.3	5.20	4.90
SDB1207150MZF	15.0 \pm 20%	1V / 1K	27.0	4.90	4.50
SDB1207180MZF	18.0 \pm 20%	1V / 1K	39.2	4.50	3.90
SDB1207220MZF	22.0 \pm 20%	1V / 1K	43.2	4.20	3.60
SDB1207270MZF	27.0 \pm 20%	1V / 1K	45.9	4.00	3.40
SDB1207330MZF	33.0 \pm 20%	1V / 1K	64.8	3.40	3.00
SDB1207390MZF	39.0 \pm 20%	1V / 1K	72.9	3.20	2.75
SDB1207470MZF	47.0 \pm 20%	1V / 1K	100	2.60	2.50
SDB1207560LZF	56.0 \pm 15%	1V / 1K	110	2.50	2.35
SDB1207680LZF	68.0 \pm 15%	1V / 1K	140	2.30	2.10
SDB1207820LZF	82.0 \pm 15%	1V / 1K	160	2.00	1.95
SDB1207101LZF	100.0 \pm 15%	1V / 1K	220	1.90	1.70
SDB1207121LZF	120.0 \pm 15%	1V / 1K	250	1.80	1.60
SDB1207151LZF	150.0 \pm 15%	1V / 1K	280	1.70	1.42
SDB1207181KZF	180.0 \pm 10%	1V / 1K	350	1.40	1.30
SDB1207221KZF	220.0 \pm 10%	1V / 1K	390	1.30	1.16
SDB1207271KZF	270.0 \pm 10%	1V / 1K	560	1.20	1.06
SDB1207331KZF	330.0 \pm 10%	1V / 1K	640	1.10	0.95
SDB1207391KZF	390.0 \pm 10%	1V / 1K	700	1.10	0.88
SDB1207471KZF	470.0 \pm 10%	1V / 1K	980	0.90	0.79
SDB1207561KZF	560.0 \pm 10%	1V / 1K	1070	0.90	0.73
SDB1207681KZF	680.0 \pm 10%	1V / 1K	1460	0.80	0.67
SDB1207821KZF	820.0 \pm 10%	1V / 1K	1640	0.60	0.60
SDB1207102KZF	1000.0 \pm 10%	1V / 1K	1820	0.60	0.55



RoHS Compliant

NOTE : Specifications subject to change without notice. Please check our website for latest information.

25.11.2014

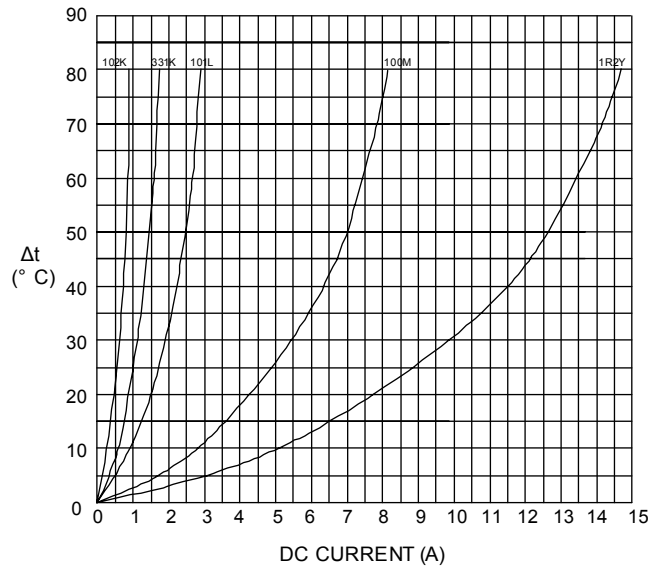


SUPERWORLD ELECTRONICS (S) PTE LTD

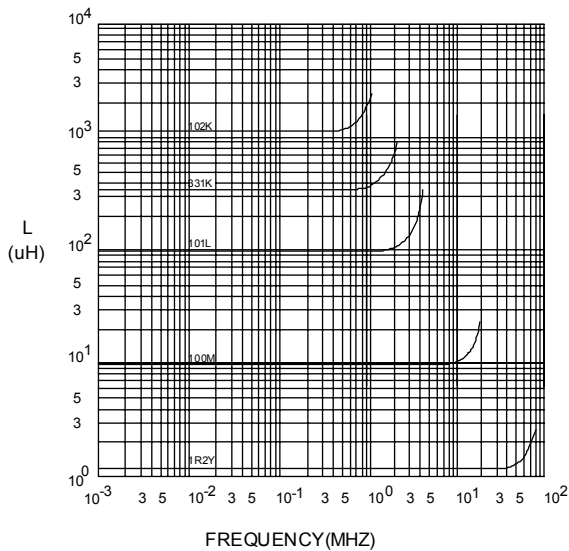
PG. 2

7. CHARACTERISTICS CURVES :

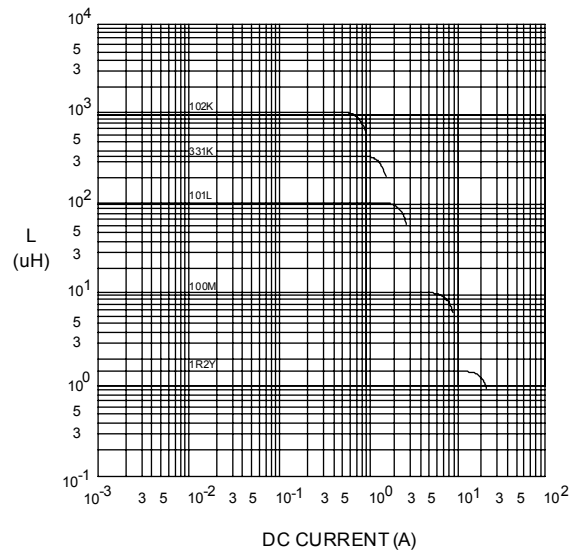
@ TEMP. RISE VS. DC SUPERPOSITION RESPONSE CURVE



@ INDUCTANCE VS. FREQUENCY RESPONSE CURVE



@ INDUCTANCE VS. DC SUPERPOSITION RESPONSE CURVE



NOTE : Specifications subject to change without notice. Please check our website for latest information.



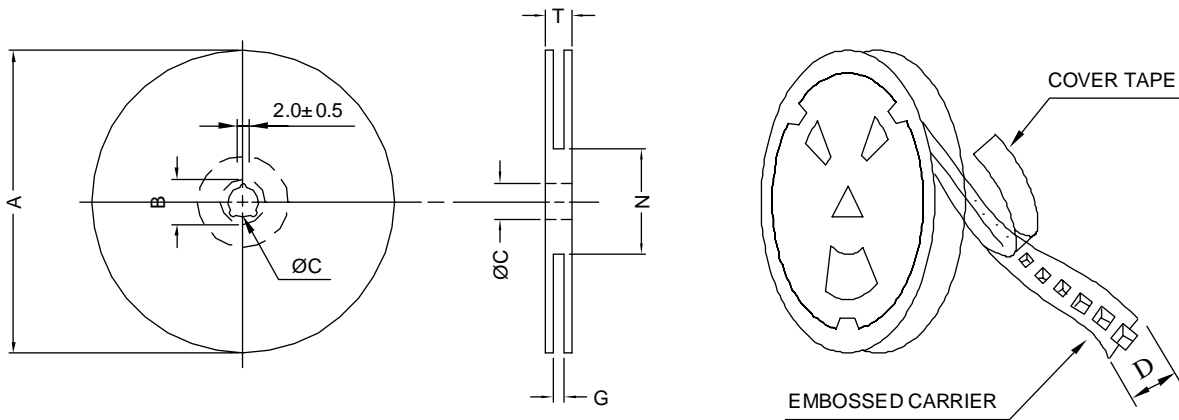
RoHS Compliant

25.11.2014

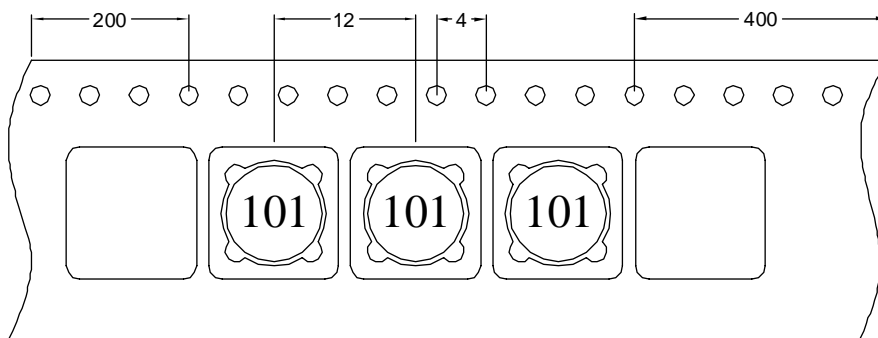


8. PACKAGING INFORMATION :

(1) CONFIGURATION



* CARRIER TAPE WIDTH : D



(2) DIMENSIONS

Unit:m/m

STYLE	A	B	C	D	G	N	T
13-24	330	21±0.8	13±0.5	24	26 ⁺⁰	50 ⁻⁰	30.4

(3) QTY & G.W. PER PACKAGE

SERIES	INNER : REEL			OUTER : CARTON		
	QTY (PCS)	G.W. (gw)	STYLE	QTY (PCS)	G.W. (Kg)	SIZE (cm)
SDB1207	400	2100	13-24	1600	11.9	38 x 36.5 x 21



RoHS Compliant

NOTE : Specifications subject to change without notice. Please check our website for latest information.

25.11.2014



SUPERWORLD ELECTRONICS (S) PTE LTD